

RETRF624 TACTICAL HEIST HYBRID JACKET Outlet



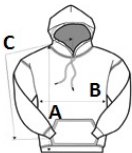
MAIN FEATURES

- 265 g/m²
- Fabric Information**
 - 265gsm 85% polyester/13% viscose/2% elastane marl knit effect fleece
 - Strategic durable ripstop panels
- Special Features**
 - Grown on hood with adjusters
 - 2 zipped lower and 1 zipped chest pocket
 - Adjustable shockcord hem
 - Made using recycled materials
- Suggested Decoration:**
 - Embroidery, Heat transfer, Screen printing
- Country Of Origin:**
 - China



SIZE SPECIFICATION (CM)

| | S |
|-------------------|----|
| Pcs./ | 16 |
| Body Length (A) | 68 |
| Chest Width (B) | 51 |
| Sleeve Length (C) | 64 |



COLORS:

Blue Wing Marl/Black