

PA379 LADIES' HIGH NECK JACKET

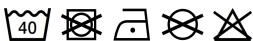


PROACT.®

MAIN FEATURES

- 310 g/m²
- 94% polyester/6% elastane (79% polyester/15% viscose/6% elastane for marl colourways)
- Extremely comfortable fabric
- Zip fastening
- 2 heat-sealed zipped front pockets
- Cuffs and hem with contrasting elasticated part
- Black on all colours and Dark Grey on the Ash Heather
- Contrasting zippers
- Ideal for wearing with tracksuit trousers PA1009 for a complete Urban Apparel look

Country Of Origin:
China

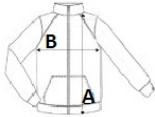


2025 : p. 296
2024 : p. 543



SIZE SPECIFICATION (CM)

| | XS | S | M | L | XL | 2XL |
|-------------------|----|----|----|----|----|-----|
| Pcs./📦 | 15 | 15 | 15 | 15 | 15 | 15 |
| Body Length (A) | 62 | 64 | 66 | 68 | 70 | 72 |
| Chest Width (B) | 43 | 46 | 49 | 52 | 55 | 58 |
| Sleeve Length (C) | 69 | 70 | 72 | 74 | 76 | 77 |



COLORS:

- Black
- Deep Grey Heather
- French Navy Heather