

AWJH150 GRADUATE HEAVYWEIGHT ZOODIE



MAIN FEATURES

- 330 g/m²
- 70% Ringspun Cotton/30% Polyester
- Standard fit
- 3 panel fabric hood with single jersey fabric inner
- Heavyweight
- Ribbed cuffs and hem
- Plastic YKK zipper and puller with chin protector
- Split kangaroo pouch pockets
- Flat lace drawcords
- Flat lock stitching detail on pocket
- Brushed inner fleece
- Tear away label
- 100% cotton faced fabric

Suggested Decoration:
DTG, Embroidery, Heat transfer, Screen printing

Certifications:



Country Of Origin:
Pakistan

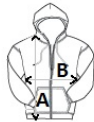


2025 : p. 198
2024 : p. 423



SIZE SPECIFICATION (CM)

	XS	S	M	L	XL	2XL	3XL
Pcs./📦	24	24	24	24	24	24	24
Body Length (A)	65	68	71	74	77	80	83
Chest Width (B)	49	51	56	61	65	69	73
Sleeve Length (C)	69	70.50	72	73.50	74	75.50	77



COLORS:

- Royal Blue
- Heather Grey
- Jet Black
- New French Navy