

## PR338 WOMEN'S COTTON RICH OXFORD STRIPES SHIRT



## MAIN FEATURES

135 g/m<sup>2</sup>**Fabric**

60% Cotton, 40% Polyester Oxford Stripe

135gsm

**Features**

Button-down collar on the underside

Contrast colour on inner neckband and cuff

Two-button cuff and single button sleeve guard

Curved hem

Bust and back darts

Modern fit

Easy care

**Suggested Decoration:**

Embroidery, Heat transfer, Screen printing

**Certifications:**

amfori

BSCI

Sedex<sup>2</sup>**Country Of Origin:**

Bangladesh



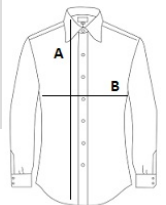
2025 : p. 95

2024 : p. 282



## SIZE SPECIFICATION (CM)

	XS	S	M	L	XL	2XL
<b>Pcs./</b>	24	24	24	24	24	24
<b>Body Length (A)</b>		79	80	80	81	81
<b>Chest Width (B)</b>		54	58	62	66	70



## COLORS:

Oxford Blue
  White/Navy
  White/Pink
  White/Grey
  White/Oxford Blue