

SO02103 SOL'S BRODY WOMEN - HERRINGBONE SHIRT

SOL'S
the fair spirit

MAIN FEATURES125 g/m²**Quality**

82% cotton - 18% polyester

Yarn-dyed

Style

Close-fitting cut

Long sleeves

Classic collar

1-button round cuffs

7-button placket

Buttoned bound slits

Chest and back darts

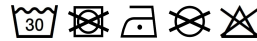
Textured fabric

Suggested Decoration:

Digital printing (DTF), Embroidery, Flex, Heat transfer, Screen printing

Certifications:**Country Of Origin:**

Bangladesh

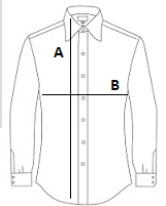


2025 : p. 130

2024 : p. 330

**SIZE SPECIFICATION (CM)**

| | XS | S | M | L | XL | 2XL |
|------------------------|-----------|----------|----------|----------|-----------|------------|
| Pcs./ | 20 | 20 | 20 | 20 | 20 | 20 |
| Body Length (A) | 67 | 68 | 69 | 70 | 71 | 72 |
| Chest Width (B) | 44.50 | 46.50 | 48.50 | 50.50 | 53 | 56 |

**COLORS:**

☒ Sky Blue ☐ White